

Silber Tonleitern Malletts

benötigt sind: 9 Dur- und 7 Molltonleitern im Quintenzirkel hintereinanderliegend.
Ein Rhythmusvorschlag ist:

C-Dur

6

9 **a-Moll natürlich**

14

17 **a-Moll harmonisch**

22 **a-Moll melodisch**

27 **G-Dur**

32

35 **e-Moll natürlich**

The image displays nine musical staves, each representing a different mode of the silver scale. Each staff begins with a treble clef and a 4/4 time signature. The first staff is for C-Dur (C major), measures 1-5. The second staff continues C-Dur, measures 6-8. The third staff is for a-Moll natürlich (A natural minor), measures 9-13. The fourth staff continues a-Moll natürlich, measures 14-16. The fifth staff is for a-Moll harmonisch (A harmonic minor), measures 17-21. The sixth staff is for a-Moll melodisch (A melodic minor), measures 22-26. The seventh staff is for G-Dur (G major), measures 27-31. The eighth staff continues G-Dur, measures 32-34. The ninth staff is for e-Moll natürlich (E natural minor), measures 35-39. Each staff ends with a double bar line and a fermata over the final note.



84



87 **fis-Moll natürlich**



92



95 **fis-Moll harmonisch**



100 **fis-Moll melodisch**



105 **E-Dur**



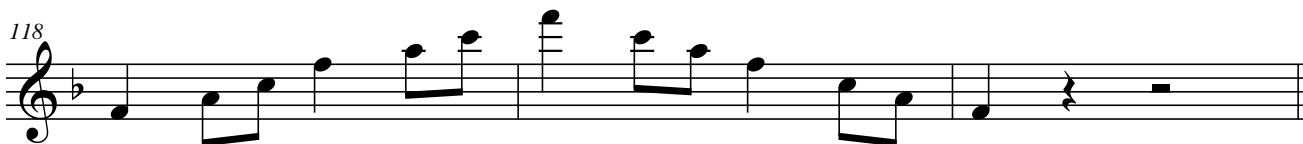
110



113 **F-Dur**



118



121 **d-Moll natürlich**



4

Silber Tonleitern Malletts

126



d-Moll harmonisch

129



d-Moll melodisch

134



B-Dur

139



144

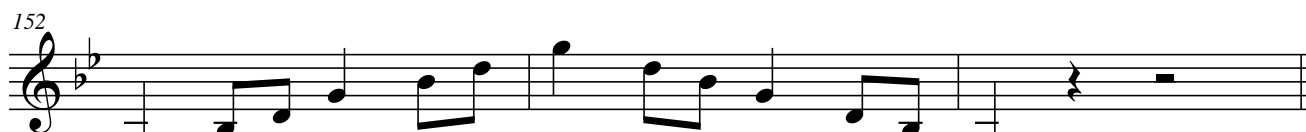


g-Moll natürlich

147



152



g-Moll harmonisch

155



g-Moll melodisch

160



Es-Dur

165

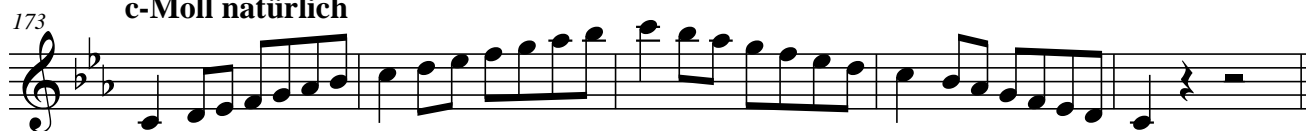


170



c-Moll natürlich

173





c-Moll harmonisch



c-Moll melodisch



As-Dur



f-Moll natürlich



f-Moll harmonisch



f-Moll melodisch



Des-Dur

