

# Silber Tonleitern Horn

benötigt sind: 9 Dur- und 7 Molltonleitern im Quintenzirkel hintereinanderliegend.  
Ein Rhythmusvorschlag ist:

**C-Dur**



**a- Moll natürlich**



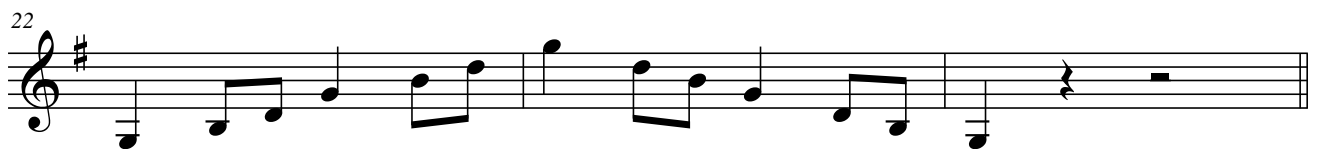
**a- Moll harmonisch**



**a- Moll melodisch**



**G- Dur**



**e- Moll natürlich**



**e- Moll harmonisch**



**e- Moll melodisch**



36 **D- Dur**



41 **h- Moll natürlich**



46 **h- Moll harmonisch**



49 **h- Moll melodisch**



52 **A- Dur**



57 **fis- Moll natürlich**



62



65 **fis- Moll harmonisch**



70 **fis- Moll melodisch**



75 **E- Dur**





122 **Es- Dur**



Musical notation for the Es-Dur scale, measures 122-126. The notation is in treble clef with a key signature of one flat (B-flat). It shows a sequence of eighth notes: E4, F4, G4, A4, B4, C5, B4, A4, G4, F4, E4, followed by a double bar line. The second measure shows the descending sequence: D5, C5, B4, A4, G4, F4, E4, followed by a double bar line.

127 **c- Moll natürlich**



Musical notation for the c-Moll naturally scale, measures 127-131. The notation is in treble clef with a key signature of two flats (B-flat, E-flat). It shows a sequence of eighth notes: C4, D4, E4, F4, G4, A4, B4, A4, G4, F4, E4, followed by a double bar line. The second measure shows the descending sequence: D4, C4, B3, A3, G3, F3, E3, followed by a double bar line.

132 **c- Moll harmonisch**



Musical notation for the c-Moll harmonisch scale, measures 132-134. The notation is in treble clef with a key signature of two flats (B-flat, E-flat). It shows a sequence of eighth notes: C4, D4, E4, F4, G4, A4, B4, A4, G4, F4, E4, followed by a double bar line. The second measure shows the descending sequence: D4, C4, B3, A3, G3, F3, E3, followed by a double bar line.

135 **c- Moll melodisch**



Musical notation for the c-Moll melodisch scale, measures 135-137. The notation is in treble clef with a key signature of two flats (B-flat, E-flat). It shows a sequence of eighth notes: C4, D4, E4, F4, G4, A4, B4, A4, G4, F4, E4, followed by a double bar line. The second measure shows the descending sequence: D4, C4, B3, A3, G3, F3, E3, followed by a double bar line.

138 **As- Dur**



Musical notation for the As-Dur scale, measures 138-142. The notation is in treble clef with a key signature of three flats (B-flat, E-flat, A-flat). It shows a sequence of eighth notes: A3, B3, C4, D4, E4, F4, G4, F4, E4, D4, C4, B3, followed by a double bar line. The second measure shows the descending sequence: A3, G3, F3, E3, D3, C3, B2, followed by a double bar line.

143 **f-Moll natürlich**



Musical notation for the f-Moll naturally scale, measures 143-147. The notation is in treble clef with a key signature of four flats (B-flat, E-flat, A-flat, D-flat). It shows a sequence of eighth notes: F3, G3, A3, B3, C4, D4, E4, D4, C4, B3, A3, followed by a double bar line. The second measure shows the descending sequence: G3, F3, E3, D3, C3, B2, A2, followed by a double bar line.

148 **f-Moll harmonisch**



Musical notation for the f-Moll harmonisch scale, measures 148-150. The notation is in treble clef with a key signature of four flats (B-flat, E-flat, A-flat, D-flat). It shows a sequence of eighth notes: F3, G3, A3, B3, C4, D4, E4, D4, C4, B3, A3, followed by a double bar line. The second measure shows the descending sequence: G3, F3, E3, D3, C3, B2, A2, followed by a double bar line.

151 **f-Moll melodisch**



Musical notation for the f-Moll melodisch scale, measures 151-155. The notation is in treble clef with a key signature of four flats (B-flat, E-flat, A-flat, D-flat). It shows a sequence of eighth notes: F3, G3, A3, B3, C4, D4, E4, D4, C4, B3, A3, followed by a double bar line. The second measure shows the descending sequence: G3, F3, E3, D3, C3, B2, A2, followed by a double bar line.

156 **f-Moll melodisch**



Musical notation for the f-Moll melodisch scale, measures 156-160. The notation is in treble clef with a key signature of four flats (B-flat, E-flat, A-flat, D-flat). It shows a sequence of eighth notes: F3, G3, A3, B3, C4, D4, E4, D4, C4, B3, A3, followed by a double bar line. The second measure shows the descending sequence: G3, F3, E3, D3, C3, B2, A2, followed by a double bar line.

161 **Des-Dur**



Musical notation for the Des-Dur scale, measures 161-165. The notation is in treble clef with a key signature of five flats (B-flat, E-flat, A-flat, D-flat, G-flat). It shows a sequence of eighth notes: D3, E3, F3, G3, A3, B3, C4, B3, A3, G3, F3, followed by a double bar line. The second measure shows the descending sequence: E3, D3, C3, B2, A2, G2, F2, followed by a double bar line.