

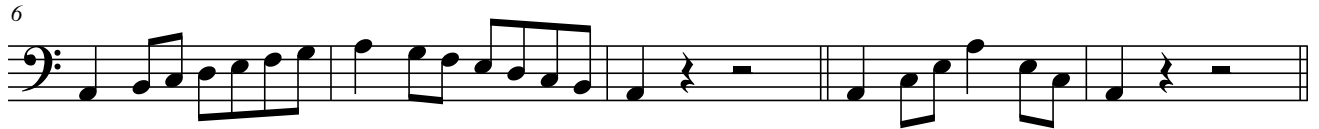
# Silber Tonleitern Posaune/Euphonium/Bariton in C

benötigt sind: 9 Dur- und 7 Molltonleitern im Quintenzirkel hintereinanderliegend.  
Ein Rhythmusvorschlag ist:

C-Dur



a-Moll natürlich



a-Moll harmonisch



a-Moll melodisch



G-Dur



e-Moll natürlich



e-Moll harmonisch



e-Moll melodisch



Silber Tonleitern Posaune/Euphonium/Bariton  
in C

2

43 **D-Dur**



Musical staff for D-Dur, measures 43-47. The staff is in bass clef with a key signature of two sharps (F# and C#). The melody consists of eighth and quarter notes, ending with a quarter rest.

48 **h-Moll natürlich**



Musical staff for h-Moll natürlich, measures 48-52. The staff is in bass clef with a key signature of two sharps (F# and C#). The melody consists of eighth and quarter notes, ending with a quarter rest.

53 **h-Moll harmonisch**



Musical staff for h-Moll harmonisch, measures 53-55. The staff is in bass clef with a key signature of two sharps (F# and C#). The melody consists of eighth and quarter notes, ending with a quarter rest.

56 **h-Moll melodisch**



Musical staff for h-Moll melodisch, measures 56-58. The staff is in bass clef with a key signature of two sharps (F# and C#). The melody consists of eighth and quarter notes, ending with a quarter rest.

59 **A-Dur**



Musical staff for A-Dur, measures 59-63. The staff is in bass clef with a key signature of three sharps (F#, C#, and G#). The melody consists of eighth and quarter notes, ending with a quarter rest.

64 **fis-Moll natürlich**



Musical staff for fis-Moll natürlich, measures 64-68. The staff is in bass clef with a key signature of three sharps (F#, C#, and G#). The melody consists of eighth and quarter notes, ending with a quarter rest.

69



Musical staff for fis-Moll natürlich, measures 69-71. The staff is in bass clef with a key signature of three sharps (F#, C#, and G#). The melody consists of eighth and quarter notes, ending with a quarter rest.

72 **fis-Moll harmonisch**



Musical staff for fis-Moll harmonisch, measures 72-76. The staff is in bass clef with a key signature of three sharps (F#, C#, and G#). The melody consists of eighth and quarter notes, ending with a quarter rest.

77 **fis-Moll melodisch**



Musical staff for fis-Moll melodisch, measures 77-81. The staff is in bass clef with a key signature of three sharps (F#, C#, and G#). The melody consists of eighth and quarter notes, ending with a quarter rest.

82 **E-Dur**



Musical staff for E-Dur, measures 82-86. The staff is in bass clef with a key signature of four sharps (F#, C#, G#, and D#). The melody consists of eighth and quarter notes, ending with a quarter rest.

87



90 **F-Dur**



95



**d-Moll natürlich**

98



**d-Moll harmonisch**

103



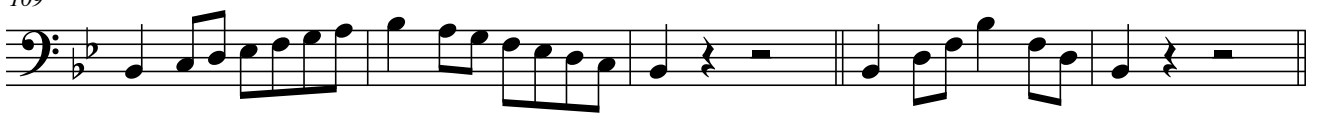
**d-Moll melodisch**

106



**B-Dur**

109



**g-Moll natürlich**

114



119



**g-Moll harmonisch**

122



Silber Tonleitern Posaune/Euphonium/Bariton  
in C

4

127

**g-Moll melodisch**



132

**Es-Dur**



137

**c-Moll natürlich**



142

**c-Moll harmonisch**



145

**c-Moll melodisch**



148

**As-Dur**



153

**f-Moll natürlich**



158



161

**f-Moll harmonisch**



166

**f-Moll melodisch**



171

**Des-Dur**

